



UNIVERSAL YARN

PATTERN COLLECTION: WOMEN



PATTERN NO.

Free

PATTERN NAME

Summer's Day Beach Sarong

SKILL LEVEL

Intermediate

FINISHED MEASUREMENTS

Hips: 36 (40, 44, 48, 52, 56)''

Length: 22 (22, 22, 23, 23, 24)''

MATERIALS

Yarn: 5 (6, 6, 7, 8, 8) – 100g/224 yd balls

Rozetti Yarns Soft Payette (70% acrylic, 22% polyester, 8% soft payette) color 158-04 Fire Opal

Needles: US Size 6 (4.0 mm) straight needles OR SIZE TO OBTAIN GAUGE
US Size 5 (3.75 mm) 24'' circular needles

Notions: tapestry needle

GAUGE

21 sts x 28 rows = 4'' in patt st with larger needles

Take your time to check for correct gauge.

ABBREVIATIONS

cont	continue
beg	beginning
K	knit
kwise	knitwise
ndls	needles
P	purl
P2tog	purl 2 together
patt	pattern
rep	repeat
RS	right side
sl	slip
SSK	slip, slip, knit
st(s)	stitch(es)
YO	yarn over

Knit. Relax. Smile. Repeat!

2010 © Universal Yarn, Inc.

All rights reserved.

www.universalyarn.com

This pattern may not be reproduced for business, trade or sale.

Elm Leaf Pattern

Multiples of 12 + 1

Row 1 (RS): K1, * YO, K4, P2tog, sl 1 st kwise, pass P2tog over slipped st, K4, YO, K1; rep from * to end.

Row 2 (and all WS rows): Purl.

Row 3: K1, * K1, YO, K3, P2tog, sl 1 st kwise, pass P2tog over slipped st, K3, YO, K2; rep from * to end.

Row 5: K1, * K2, YO, K2, P2tog, sl 1 st kwise, pass P2tog over slipped st, K2, YO, K3; rep from * to end.

Row 7: K1, * K3, YO, K1, P2tog, sl 1 st kwise, pass P2tog over slipped st, K1, YO, K4; rep from * to end.

Row 9: K1, * K4, YO, P2tog, sl 1 st kwise, pass P2tog over slipped st, YO, K5; rep from * to end.

Row 11: K2tog, * K4, YO, K1, YO, K4, P2tog, sl 1 st kwise, pass P2tog over slipped st; rep from *, ending last rep SSK.

Row 13: K2tog, * K3, YO, K3, YO, K3, P2tog, sl 1 st kwise, pass P2tog over slipped st; rep from *, ending last rep SSK.

Row 15: K2tog, * K2, YO, K5, YO, K2, P2tog, sl 1 st kwise, pass P2tog over slipped st; rep from * ending last rep SSK.

Row 17: K2tog, * K1, YO, K7, YO, K1, P2tog, sl 1 st kwise, pass P2tog over slipped st; rep from * ending last rep SSK.

Row 19: K2tog, * YO, K9, YO, P2tog, sl 1 st kwise, pass P2tog over slipped st; rep from * ending last rep SSK.

Row 20: Purl.

Rep rows 1-20 for patt st.

SARONG

With larger ndls, cast on 145 (169, 193, 217, 241, 265) sts.

Purl 1 WS row.

Row 1 (RS): Work row 1 of patt st.

Work even in patt until piece measures 14½ (14½, 14½, 15½, 15½, 16½)” from cast on, ending after a WS row.

Ties

At beg of next 8 rows, cast on 6 sts, incorporating new sts into patt – 193 (217, 241, 265, 289, 313) sts. At beg of foll 36 rows, cast on 2 sts at beg of row cont to incorporate new sts into patt – 265 (289, 313, 337, 361, 385) sts. Work even in patt until piece measures 19½ (19½, 19½, 20½, 20½, 21½)”, ending after a WS row.

Change to smaller ndls, knit 1 row (RS).

Work even in Garter st for 19 more rows.

Bind off all sts loosely.

FINISHING

Edging

With smaller ndls and RS facing, pick up and knit 388 (400, 424, 458, 482, 516) sts evenly around side and lower edges.

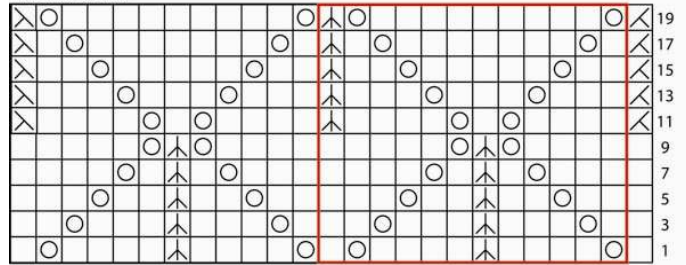
Work even in Garter st for 9 rows.

Bind off all sts loosely.

Weave in ends.

Block lightly.

ELM LEAF CHART



Key



Knit



Yarnover



K2tog



SSK



P2tog, sl 1 st kwise,
pass P2tog over slipped st



Knit. Relax. Smile. Repeat!

2010 © Universal Yarn, Inc.

All rights reserved.

www.universalyarn.com

This pattern may not be reproduced for business, trade or sale.